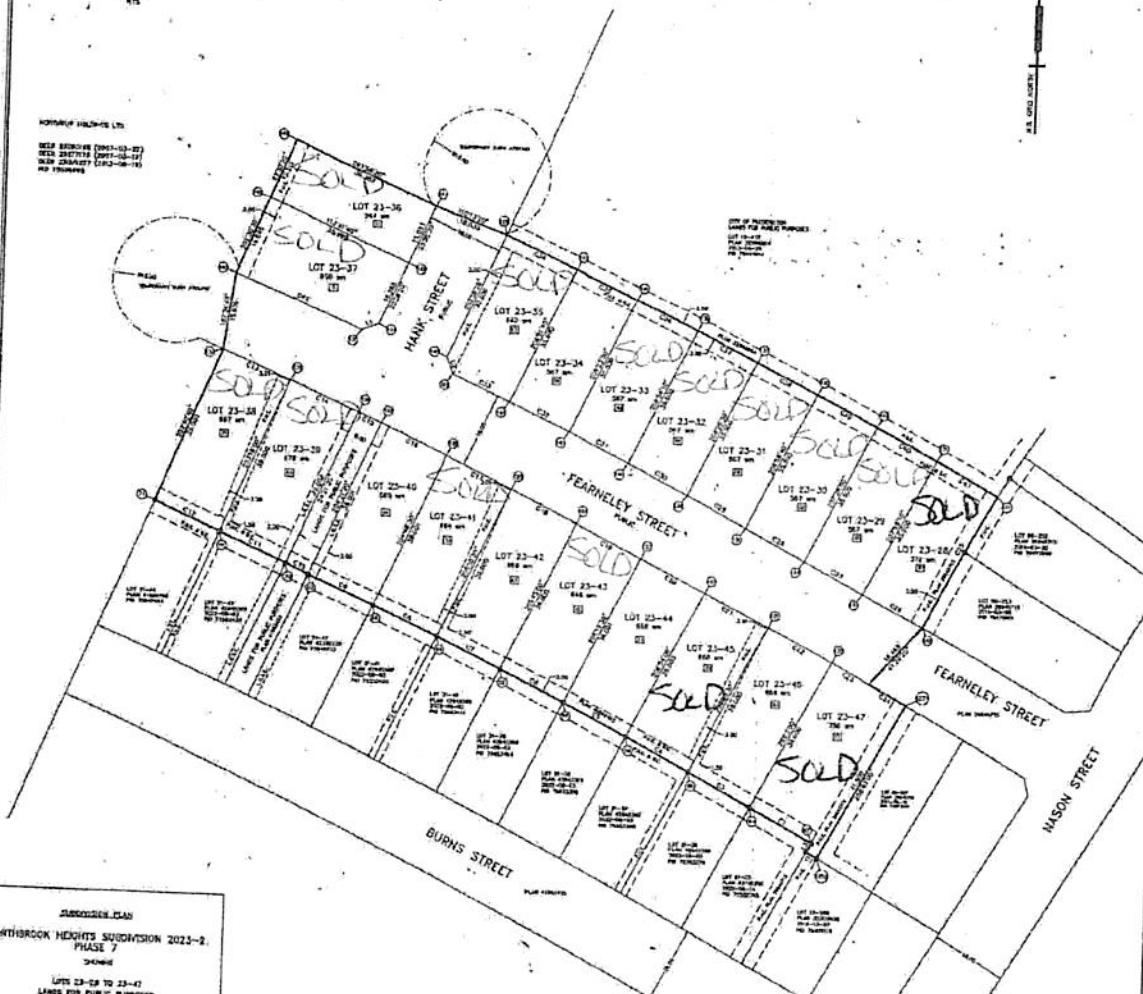


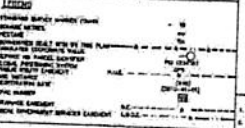


NOTICE OF HOLDING TITLE
 SELF SERVICED (2017-03-29)
 CITY OF MONTREAL (2017-03-29)
 NEW SUBDIVISION (2017-03-29)
 NO. 1234567



PROPOSED PLAN
 NORTHBROOK HEIGHTS SUBDIVISION 2023-2,
 PHASE 7
 LOTS 23-28 TO 23-47
 LOTS FOR PUBLIC PLANNING
 FEARNELEY STREET
 HANK STREET
 CITY OF MONTREAL
 COUNTY OF MONTREAL
 PROVINCE OF QUEBEC

NOTES
 1. THIS PLAN IS A LAYOUT OF THE LOTS AND IS NOT A TITLE DOCUMENT.
 2. THE LOTS ARE TO BE PLANNED FOR PUBLIC PLANNING PURPOSES.
 3. THE LOTS ARE TO BE PLANNED FOR PUBLIC PLANNING PURPOSES.
 4. THE LOTS ARE TO BE PLANNED FOR PUBLIC PLANNING PURPOSES.
 5. THE LOTS ARE TO BE PLANNED FOR PUBLIC PLANNING PURPOSES.



SCALE 1:500
 0 10 20 30
 METERS

SURVEYOR'S CERTIFICATE
 I, the undersigned, being duly sworn, do hereby certify that the foregoing plan and map are true and correct copies of the original plan and map as filed in my office, and that I have compared the same with the original plan and map as filed in my office, and that I have compared the same with the original plan and map as filed in my office.

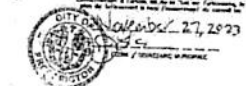
EASTERN LAND SURVEYS (1993) LTD.
 200 PEARSON ROAD
 BARRINGTON, N.S. B3Z 0K2
 TEL: 526-4287 FAX: 526-0627
 E-MAIL: ELS@ELSLTD.COM

TABLE OF A.S. TO-COMMON VALUES

LOT NO.	AREA (sq. m.)	AREA (sq. ft.)	AREA (sq. ft.)
23	1,234.56	13,500	13,500
24	1,234.56	13,500	13,500
25	1,234.56	13,500	13,500
26	1,234.56	13,500	13,500
27	1,234.56	13,500	13,500
28	1,234.56	13,500	13,500
29	1,234.56	13,500	13,500
30	1,234.56	13,500	13,500
31	1,234.56	13,500	13,500
32	1,234.56	13,500	13,500
33	1,234.56	13,500	13,500
34	1,234.56	13,500	13,500
35	1,234.56	13,500	13,500
36	1,234.56	13,500	13,500
37	1,234.56	13,500	13,500
38	1,234.56	13,500	13,500
39	1,234.56	13,500	13,500
40	1,234.56	13,500	13,500
41	1,234.56	13,500	13,500
42	1,234.56	13,500	13,500
43	1,234.56	13,500	13,500
44	1,234.56	13,500	13,500
45	1,234.56	13,500	13,500
46	1,234.56	13,500	13,500
47	1,234.56	13,500	13,500
48	1,234.56	13,500	13,500
49	1,234.56	13,500	13,500
50	1,234.56	13,500	13,500
51	1,234.56	13,500	13,500
52	1,234.56	13,500	13,500
53	1,234.56	13,500	13,500
54	1,234.56	13,500	13,500
55	1,234.56	13,500	13,500
56	1,234.56	13,500	13,500
57	1,234.56	13,500	13,500
58	1,234.56	13,500	13,500
59	1,234.56	13,500	13,500
60	1,234.56	13,500	13,500
61	1,234.56	13,500	13,500
62	1,234.56	13,500	13,500
63	1,234.56	13,500	13,500
64	1,234.56	13,500	13,500
65	1,234.56	13,500	13,500
66	1,234.56	13,500	13,500
67	1,234.56	13,500	13,500
68	1,234.56	13,500	13,500
69	1,234.56	13,500	13,500
70	1,234.56	13,500	13,500
71	1,234.56	13,500	13,500
72	1,234.56	13,500	13,500
73	1,234.56	13,500	13,500
74	1,234.56	13,500	13,500
75	1,234.56	13,500	13,500
76	1,234.56	13,500	13,500
77	1,234.56	13,500	13,500
78	1,234.56	13,500	13,500
79	1,234.56	13,500	13,500
80	1,234.56	13,500	13,500
81	1,234.56	13,500	13,500
82	1,234.56	13,500	13,500
83	1,234.56	13,500	13,500
84	1,234.56	13,500	13,500
85	1,234.56	13,500	13,500
86	1,234.56	13,500	13,500
87	1,234.56	13,500	13,500
88	1,234.56	13,500	13,500
89	1,234.56	13,500	13,500
90	1,234.56	13,500	13,500
91	1,234.56	13,500	13,500
92	1,234.56	13,500	13,500
93	1,234.56	13,500	13,500
94	1,234.56	13,500	13,500
95	1,234.56	13,500	13,500
96	1,234.56	13,500	13,500
97	1,234.56	13,500	13,500
98	1,234.56	13,500	13,500
99	1,234.56	13,500	13,500
100	1,234.56	13,500	13,500

ENDORSEMENTS
 1. THIS PLAN IS A LAYOUT OF THE LOTS AND IS NOT A TITLE DOCUMENT.
 2. THE LOTS ARE TO BE PLANNED FOR PUBLIC PLANNING PURPOSES.
 3. THE LOTS ARE TO BE PLANNED FOR PUBLIC PLANNING PURPOSES.
 4. THE LOTS ARE TO BE PLANNED FOR PUBLIC PLANNING PURPOSES.

Paid received and Stedman reçu de déposé
 document 2024-02-20 (numéro 181247
 numéro de récépissé 48724137
 District de Notre-Dame-de-la-Santé
 Circulaire du nouveau- Brunswick



SIGNATURE / SIGNATURE
 [Signature]
 [Signature]